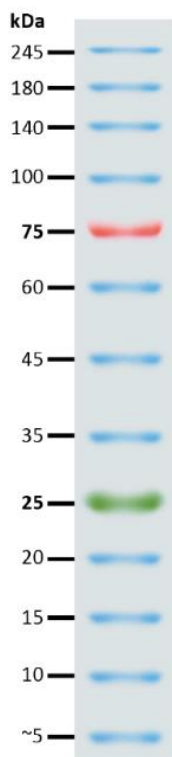


## Azura PureView™ Prestained Protein Ladder

Catalog No.	Pack Size and Presentation	Concentration
AZ-1141	1 x 500 µl	0.1~0.4 mg/mL of each protein
AZ-1142	2 x 500 µl	0.1~0.4 mg/mL of each protein
AZ-1142-2	4 x 500 µl	0.1~0.4 mg/mL of each protein



- Ready-to-use three-color protein standard with 13 pre-stained proteins.
- Covers a wide range of molecular weights from 5 to 245 kDa in Tris-Glycine buffer (3.5 kDa to 235 kDa in Bis-Tris (MOPS) buffer and Bis-Tris (MES) buffer).
- Proteins are covalently coupled with a blue chromophore except for two reference bands (one green and one red band at 25 kDa and 75 kDa, respectively) when separated on SDS-PAGE (Tris-Glycine buffer).

**Protocol for Use:** The PureView™ Prestained Protein Ladder is designed for monitoring protein separation during SDS-polyacrylamide gel electrophoresis, verification of Western transfer efficiency on membranes (nitrocellulose, PVDF, or nylon) and for approximating the size of proteins. The marker is supplied in gel loading buffer and is ready to use. **Do NOT heat, dilute, or add reducing agents before loading.**

**Loading Volume**

- **3 µl** or **5 µl** for clear visualization during electrophoresis on a 15-well or 10-well mini-gel, respectively.
- **1.5 - 2.5 µl** per well for general Western blotting transfer.
- Apply more for a thicker (> 1.5 mm) or larger gel.

See Table 1 below for Molecular Weight Estimation.


**Contents:** Approximately 0.1~0.4 mg/ml of each protein in the buffer (20 mM Tris-phosphate (pH 7.5 at 25°C), 2 % SDS, 0.2 mM Dithiothreitol, 3.6 M Urea, and 15 % Glycerol).

**Storage Conditions:** PureView™ Prestained Protein Ladder is shipped at 4°C. On arrival, store at -20°C for 24 months, or 4°C for 3 months.

**Quality Control:** Under suggested conditions, PureView™ Prestained Protein Ladder resolves 13 major bands in SDS-PAGE (Tris-Glycine, MOPS, and MES buffer) and after Western blotting transfer to a nitrocellulose membrane.

**TABLE 1: Guide for Molecular Weight Estimation**

Migration patterns and approximate molecular weight (kDa) of PureView™ Prestained Protein Ladder bands in different electrophoresis conditions are listed below:

Band	Color	TRIS- GLYCINE	BIS-TRIS (MOPS)	BIS-TRIS (MES)	
1	Blue	245	235	235	
2	Blue	180	170	170	
3	Blue	140	130	130	
4	Blue	100	93	93	
5	Red	75	70	72	
6	Blue	60	53	53	
7	Blue	45	41	42	
8	Blue	35	30	30	
9	Green	25	22	23	
10	Blue	20	18	18	
11	Blue	15	14	14	
12	Blue	10	9	10	
13	Blue	~5	~3.5	~3.5	