

ExtremeTaq™ HiFi Mix



A Single PCR Master Mix ---- Unlimited Solutions

ExtremeTaq HiFi Mix is a robust, high-fidelity DNA polymerase complex ideally suited to a wide range of DNA templates including the most challenging DNA targets and inhibitor-rich samples. ExtremeTaq HiFi Mix is a hot-start 2x formulation which provides excellent sensitivity in low-copy number assays with 10x higher fidelity than Taq polymerase.

The 2x master-mix contains proprietary enhancers, hot-start antibodies and a proof-reading component for trouble-free PCR reaction assembly and performance. ExtremeTaq HiFi Mix delivers a unique balance of PCR sensitivity, high fidelity, versatility, and tolerance to inhibitors. The pre-optimized ExtremeTaq HiFi Mix is supplied in a single tube, reducing the number of pipetting steps while improving throughput and reproducibility. The highly efficient buffer formulation and hot-start blend provide the ideal conditions for high-performance PCR and inactivity at room temperature thereby eliminating non-specific amplification. ExtremeTaq HiFi Mix is also available with an inert red gel loading and tracking dye allowing samples to be loaded directly in agarose gel wells without separate gel loading buffers. ExtremeTaq HiFi Red Mix contains a red dye which migrates at the rate of 600bp and 350bp DNA in a 1% and 2% TAE agarose gels respectively.

Applications

- PCR of difficult DNA templates (GC- or AT-rich regions) and inhibitor-rich samples
- TA Cloning
- low-copy number PCR
- High-fidelity PCR and Long PCR up to 10kb.

Assay Flexibility and Accuracy

Optimized 2x PCR blend provides robust hot-start PCR in a wide range of applications with 10x higher fidelity than *Taq* Polymerase

Robust Amplification

Provides greater yields and specificity than other PCR master-mixes, even in low-copy number assays, long PCR up to 10Kb, and in the presence of common PCR inhibitors

Convenience of Minimal Optimization

ExtremeTaq HiFi Mix is designed and optimized for ease-of-use and broad compatibility with DNA templates of various lengths and complexity

Versatility

High-performance amplification of complex DNA samples extracted from human, animal, plant, bacteria, *C. elegans*, soil and water

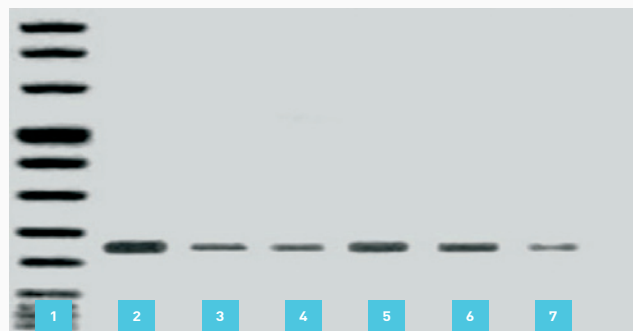


Fig 1. ExtremeTaq HiFi Mix provides robust PCR of GC-rich DNA.

Human chromosome 19 (73% GC-rich, 860bp fragment). Lane 1: MW Marker. Lanes 2 - 4: 50ng, 5ng, 2.5ng template DNA respectively. Lanes 5 - 8: 50ng, 25ng, 5ng and 1ng template DNA in the presence of 5µl crude tissue lysate.



ExtremeTaq™ HiFi Mix



Products	Pack Size	Catalog No.	Price
ExtremeTaq HiFi Mix	200 Reactions / 2 x 1.25 mL	AZ-1900	\$99
ExtremeTaq HiFi Mix	1000 Reactions / 10 x 1.25 mL	AZ-1901	\$429
ExtremeTaq HiFi Mix	2000 Reactions / 5 x 5 mL	AZ-1902	\$719
ExtremeTaq HiFi Red Mix	200 Reactions / 2 x 1.25 mL	AZ-1910	\$99
ExtremeTaq HiFi Red Mix	1000 Reactions / 10 x 1.25 mL	AZ-1911	\$429
ExtremeTaq HiFi Red Mix	2000 Reactions / 5 x 5 mL	AZ-1912	\$719