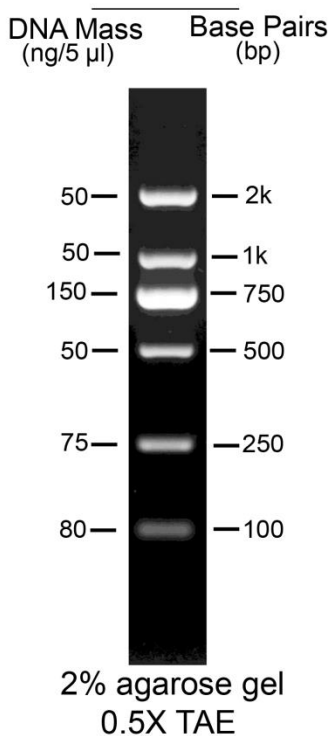


Azura PureView™ PCR DNA Ladder

Catalog No.	Pack Size and Presentation	Concentration
AZ-1121	100 Lanes / 1 x 500 µl	0.1 mg/mL
AZ-1125	500 Lanes / 5 x 500 µl	0.1 mg/mL
AZ-1125-2	1000 Lanes / 10 x 500 µl	0.1 mg/mL



- 6 sharp and bright bands from 100 bp – 2.0 kb
- Ready-to-use format with high-intensity reference band at 750 bp
- Suitable for agarose and polyacrylamide gel electrophoresis

Protocol for Use: Mix gently by inversion and use **5 µl per lane**. There is no need to add any additional loading buffer to the vial of ready-to-load PureView™ PCR DNA Ladder which contains two loading and tracking dyes. Xylene cyanol FF and Orange G mimic the migration of 4,000 bp and 50 bp DNA fragments respectively during electrophoresis.

Storage Conditions: PureView™ PCR DNA Ladder is shipped at 4°C. On arrival, store at -20°C for 36 months, 4°C for 12 months or 25 °C for up to 6 months.

Quality Control: PureView™ PCR DNA Ladder is extensively tested prior to release using an agarose gel to verify the sharpness of each band and a spectrophotometer for DNA concentration.