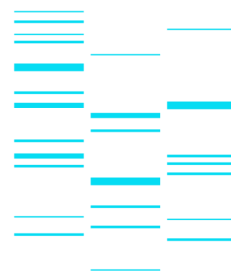
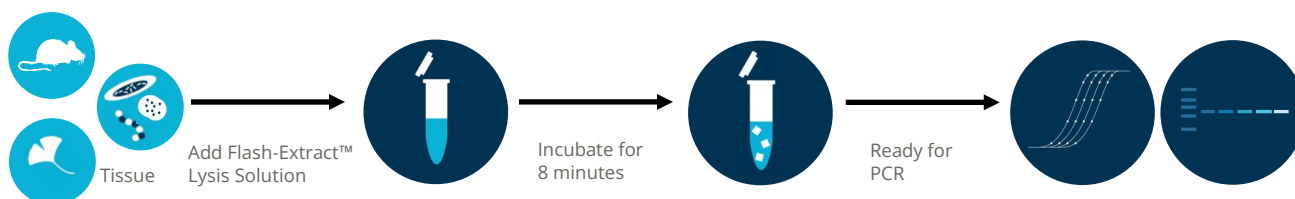


# Flash-Extract™ PCR Kit



## Direct from Sample to PCR Result in Less than 1 Hour

Azura Flash-Extract™ PCR Kit provides for an ultra-fast, low-cost, and highly efficient method of DNA Extraction and amplification from a variety of solid tissues including mouse tails and ear punches, plant leaves, bacteria, and saliva.



Flash-Extract™ PCR Kit includes a proprietary single-tube extraction solution which releases genomic DNA in only 8 minutes, followed by PCR amplification using Azura ExtremeTaq™ HiFi Red Mix for high performance end-point PCR. ExtremeTaq™ HiFi Red Mix is a 2x hot-start mixture which also includes an inert red dye to facilitate direct gel-loading.

For the flexibility to accommodate various work-flows, PCR-ready genomic DNA can be used immediately in end-point PCR, used in real-time PCR with SYBR Green or TaqMan Probe based chemistry, or stored at -20° C.

### Applications

DNA extraction and PCR from mouse tail, mouse ear, plant leaves, bacteria, and saliva

### Exceptional Performance

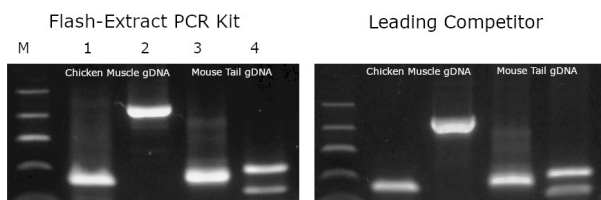
Simple, ultra-fast tissue lysis followed by robust amplification which outperforms conventional methods and other commercial kits

### Convenience of Minimal Handling

Automation-friendly solution for extraction of PCR-ready genomic DNA

### 1-Hour Work-flow

DNA Extraction and PCR can be complete in less than 60 minutes for improved turnaround time



Products	Pack Size	Catalog No.
Flash-Extract™ PCR Kit	100 Reactions	AZ-3310
Flash-Extract™ PCR Kit	400 Reactions	AZ-3340