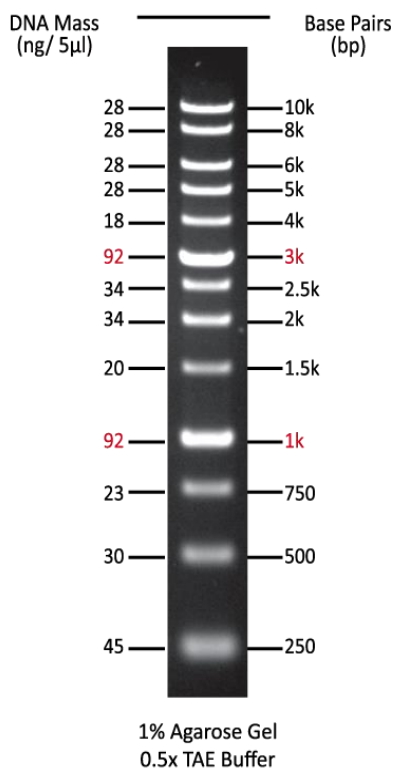


Azura PureView™ 1 kb DNA Ladder

Catalog No.	Pack Size and Presentation	Concentration
AZ-1101	100 Lanes / 1 x 500 µl	0.1 mg/mL
AZ-1105	500 Lanes / 5 x 500 µl	0.1 mg/mL
AZ-1105-2	1000 Lanes / 10 x 500 µl	0.1 mg/mL



- 13 sharp and bright bands from 250 bp – 10,000 bp
- Ready-to-use format with high-intensity reference bands at 1000 bp and 3000 bp

Protocol for Use: Mix gently and use **5µl per lane**. There is no need to add any additional loading buffer to the vial of ready-to-load PureView™ 1 kb DNA Ladder which contains two loading and tracking dyes. Xylene cyanol FF and bromophenol blue mimic the migration of 4,000 bp and 500 bp DNA fragments during electrophoresis. See Table 1 on reverse side for additional electrophoretic separation guidelines.

Storage Conditions: PureView™ 1 kb DNA Ladder is shipped at 4°C. On arrival, store at -20°C for 36 months, 4°C for 12 months or 25 °C for up to 6 months.

Quality Control: PureView™ 1 Kb DNA Ladder is extensively tested prior to release to verify the sharpness of each band and a spectrophotometer for DNA concentration.

TABLE 1: Electrophoretic Separation Guidelines

Agarose Gel, %	Effective Range, bp	Bromophenol Blue in bp*		Xylene Cyanol FF in bp*	
		TBE Buffer	TAE Buffer	TBE Buffer	TAE Buffer
0.8	800 - 10000	320	530	4830	6500
0.9	600 - 10000	260	440	3770	5140
1.0	400 - 8000	220	370	3030	4160
1.2	300 - 7000	160	275	2070	2890
1.5	200 - 3000	110	190	1300	1840
2.0	100 - 2000	65	120	710	1040
3.0	25 - 1000	30	60	300	460

*The values indicate the size of DNA fragments in bp with which the dye will co-migrate